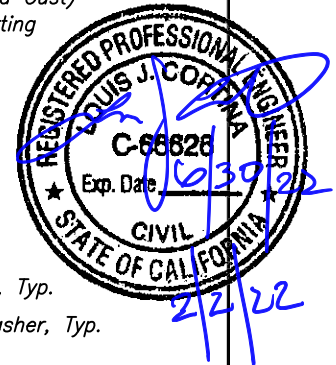
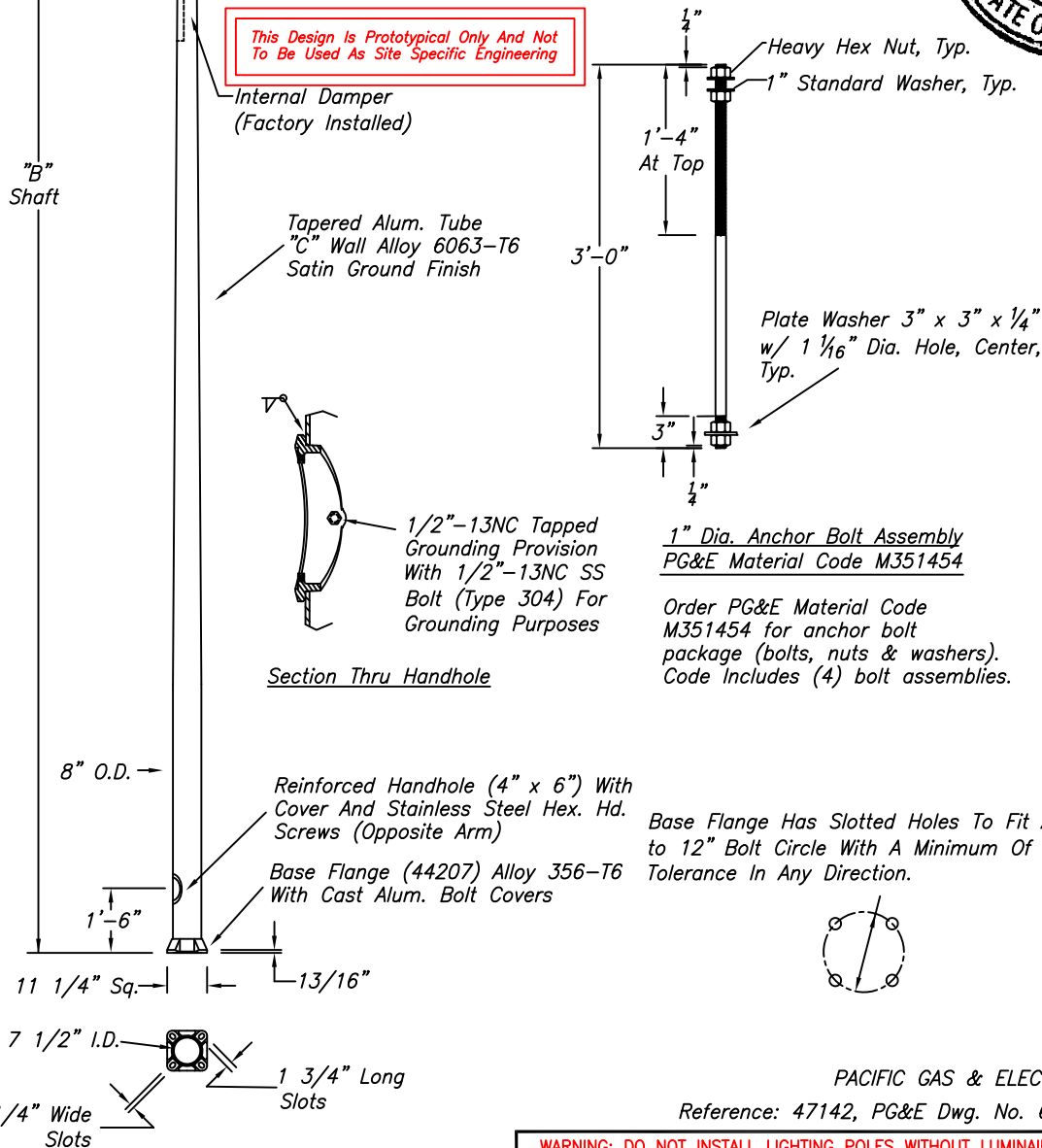


This Pole Has Been Designed For 90 MPH Wind Speeds (3 Second Gust)
Per AASHTO LTS-6 (2013) And All Interim Revisions When Supporting
One Fixture With An EPA = 1.5 Sq. Ft. And Weighs 30 Lbs.

P.G. & E. Material Code	HAPCO Item No.	A	B	C	D	E
M357123	106433-001	27'-6"	26'-6"	.188"	4'	1'-6"
M357124	106433-002	32'-6"	31'-0"	.188"	6'	2'-0"
M357125	106433-003	35'-0"	33'-6"	.250"	6'	2'-0"
M357185	106433-004	28'-0"	26'-6"	.188"	6'	2'-0"

**This Design Is Prototypical Only And Not
To Be Used As Site Specific Engineering**



106433

Base Flange Has Slotted Holes To Fit An 11" to 12" Bolt Circle With A Minimum Of 1/8" Tolerance In Any Direction.

PACIFIC GAS & ELECTRIC CO.

Reference: 47142, PG&E Dwg. No. 6055666

WARNING: DO NOT INSTALL LIGHTING POLES WITHOUT LUMINAIRES

NO.	REVISIONS	DATE	TITLE STREET LIGHTING POLES	
1	Added Base Dimensions (DG)	9.21	CUSTOMER	
			SCALE 32	DATE 4.29.21
			BY RDG	DWG. NO.
			CHK'D	106433

hapco
Abingdon, Va.